

Have you ever taken the Express Bus being used on the Highway 1 corridor between Chilliwack and the Carvolth Exchange in Langley having to transfer beyond that point to destinations within Langley or points west?



	South Fraser	GENDER			AGE			MUNICIPALITY					WEEKDAY COMMUTE		EXPRESS BUS?	
		Male	Female	18-34	35-54	55+	North Delta	North Surrey	Langley (City)	Langley (Township)	Abbotsford	Chilliwack	Drive	Transit	Yes	No
Yes	49%	50%	47%	65%	49%	13%	55%	45%	64%	46%	45%	38%	53%	65%	100%	0%
No	51%	50%	53%	35%	51%	87%	45%	55%	36%	54%	55%	62%	47%	35%	0%	100%

Which of the following statements best describes your view on the Express Bus being used on the Highway 1 corridor from Chilliwack to the Carvolth Exchange in Langley?



	South Fraser	AGE					MUNICIPALITY						WEEKDAY COMMUTE		EXPRESS BUS?	
		Male	Female	18-34	35-54	55+	North Delta	North Surrey	Langley (City)	Langley (Township)	Abbotsford	Chilliwack	Drive	Transit	Yes	No
The Express Bus fits the needs of the community—no other public transit alternative is required at this time	32%	35%	29%	41%	26%	27%	41%	36%	31%	31%	29%	9%	31%	39%	39%	25%
The Express Bus does not fit the needs of the community—residents need another public transit alternative	46%	49%	43%	44%	54%	35%	40%	40%	58%	48%	47%	58%	48%	49%	55%	37%
Not sure	22%	16%	28%	15%	21%	39%	19%	25%	12%	21%	24%	32%	21%	12%	6%	38%

Are you aware that there is a publicly owned 99 km operating Rail corridor (known as the Interurban Corridor) available with passenger rights saved and protected by a previous provincial government at no cost for its use between the Pattullo Bridge SkyTrain Station and the City of Chilliwack?

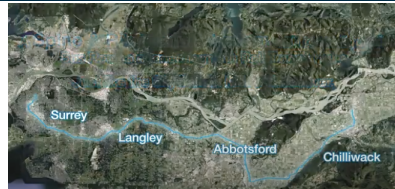


	South Fraser	GENDER		AGE			MUNICIPALITY					WEEKDAY COMMUTE		EXPRESS BUS?		
		Male	Female	18-34	35-54	55+	North Delta	North Surrey	Langley (City)	Langley (Township)	Abbotsford	Chilliwack	Drive	Transit	Yes	No
Yes	41%	46%	36%	48%	36%	37%	56%	35%	51%	41%	38%	24%	40%	52%	55%	28%
No	59%	54%	64%	52%	64%	63%	44%	65%	49%	59%	62%	76%	60%	48%	45%	72%

There is a proposal to reactivate this rail corridor for daily passenger service every half hour with state-of-the-art Hydrogen-powered trains. The project is known as South Fraser Community Rail and would connect 16 cities and communities, eight First Nations communities, 14 post-secondary Institutions, Industrial Parks and the Abbotsford International Airport.

Similar services are currently in active use in the United Kingdom, Germany, Austria, the Netherlands, Italy and being constructed in Southern California.

Note: The following video depicts what is now available in new technology. The rail line exists and is operational, the population centers and population numbers are factual and current, the station locations with park 'n rides adjacent are only proposed.



From what you have just seen, read and heard about the South Fraser Community Rail project, do you support or oppose it?



	South Fraser	GENDER		AGE			MUNICIPALITY					WEEKDAY COMMUTE		EXPRESS BUS?		
		Male	Female	18-34	35-54	55+	North Delta	North Surrey	Langley (City)	Langley (Township)	Abbotsford	Chilliwack	Drive	Transit	Yes	No
Strongly support	44%	48%	41%	31%	46%	67%	38%	45%	34%	49%	55%	48%	44%	45%	39%	50%
Moderately support	44%	42%	47%	53%	42%	30%	47%	48%	42%	43%	38%	41%	46%	47%	51%	37%
Moderately oppose	5%	6%	4%	7%	5%	1%	8%	4%	10%	0%	4%	3%	4%	4%	6%	4%
Strongly oppose	2%	2%	3%	3%	3%	1%	4%	1%	6%	2%	1%	1%	2%	2%	2%	3%
Not sure	4%	3%	5%	6%	4%	2%	3%	2%	8%	7%	2%	7%	4%	2%	2%	6%

Would any of the following make you more likely, just as likely or less likely to support the South Fraser Community Rail project?



	South Fraser	GENDER		AGE			MUNICIPALITY					WEEKDAY COMMUTE		EXPRESS BUS?		
		Male	Female	18-34	35-54	55+	North Delta	North Surrey	Langley (City)	Langley (Township)	Abbotsford	Chilliwack	Drive	Transit	Yes	No
<i>The project will take three years to implement—a significantly quicker delivery timeframe than any other potential option.</i>																
More likely to support the project	49%	53%	45%	40%	53%	58%	46%	47%	38%	47%	60%	56%	52%	44%	48%	49%
Just as likely to support the project	37%	35%	39%	38%	38%	34%	38%	38%	39%	42%	33%	34%	36%	38%	39%	36%
Less likely to support the project	8%	8%	8%	14%	4%	4%	10%	9%	14%	6%	2%	3%	6%	13%	10%	6%
Not sure	6%	4%	8%	8%	5%	5%	6%	6%	9%	5%	4%	7%	6%	6%	3%	9%
<i>The project will cost an estimated \$1.38 billion for 99 KMs—significantly less expensive than any other Inter-regional transit option.</i>																
More likely to support the project	44%	49%	40%	40%	45%	52%	42%	45%	41%	39%	51%	45%	47%	44%	44%	44%
Just as likely to support the project	36%	34%	38%	33%	38%	37%	36%	36%	31%	48%	33%	36%	33%	37%	34%	38%
Less likely to support the project	11%	11%	11%	14%	11%	3%	14%	10%	19%	5%	8%	7%	11%	11%	14%	8%
Not sure	9%	6%	12%	13%	6%	8%	9%	9%	9%	8%	8%	13%	9%	8%	7%	11%
<i>The project will be good for the environment since it relies on a Hydrogen propulsion system, with zero greenhouse gas emissions.</i>																
More likely to support the project	56%	57%	56%	48%	60%	66%	43%	62%	45%	63%	68%	57%	57%	58%	54%	58%
Just as likely to support the project	29%	27%	30%	28%	29%	29%	38%	26%	32%	23%	23%	26%	28%	29%	31%	26%
Less likely to support the project	9%	11%	6%	14%	7%	2%	12%	8%	13%	9%	4%	7%	9%	7%	9%	8%
Not sure	6%	5%	8%	10%	4%	3%	7%	4%	10%	5%	6%	10%	5%	7%	5%	7%
<i>The project would allow for a commute time of 90 minutes from Chilliwack to the Pattulo Bridge—a significantly quicker commute time than the 135 minutes plus transfer time to cover the same distance with existing transit services.</i>																
More likely to support the project	53%	53%	53%	50%	54%	58%	43%	56%	43%	50%	68%	58%	55%	55%	50%	56%
Just as likely to support the project	33%	34%	32%	31%	34%	33%	36%	32%	34%	40%	24%	31%	31%	30%	36%	30%
Less likely to support the project	6%	7%	5%	9%	5%	2%	10%	7%	9%	0%	2%	3%	5%	8%	7%	5%
Not sure	8%	6%	10%	11%	6%	7%	10%	5%	13%	10%	6%	8%	8%	7%	6%	10%
<i>One South Fraser Community Rail train would potentially remove 160 vehicles from Highway 1.</i>																
More likely to support the project	49%	49%	50%	42%	54%	55%	41%	56%	33%	51%	60%	51%	51%	50%	49%	50%
Just as likely to support the project	37%	37%	36%	35%	37%	38%	39%	34%	44%	35%	32%	39%	37%	35%	38%	35%
Less likely to support the project	8%	9%	6%	13%	5%	3%	12%	4%	18%	5%	4%	3%	5%	10%	9%	7%
Not sure	6%	5%	8%	10%	5%	4%	8%	6%	5%	9%	4%	6%	7%	6%	5%	8%

If the South Fraser Community Rail project is reactivated to connect 16 cities and communities, eight First Nations communities, 14 post-secondary Institutions, Industrial Parks and the Abbotsford International Airport, how likely are you to use it, either for work or leisure?



	South Fraser	GENDER		AGE			MUNICIPALITY						WEEKDAY COMMUTE		EXPRESS BUS?	
		Male	Female	18-34	35-54	55+	North Delta	North Surrey	Langley (City)	Langley (Township)	Abbotsford	Chilliwack	Drive	Transit	Yes	No
Very likely	35%	41%	30%	31%	39%	38%	33%	32%	34%	27%	48%	39%	36%	45%	44%	27%
Moderately likely	43%	40%	47%	51%	41%	32%	45%	47%	44%	48%	38%	31%	45%	43%	46%	41%
Not too likely	11%	12%	10%	11%	8%	14%	11%	10%	12%	12%	12%	7%	9%	6%	8%	14%
Not likely at all	5%	3%	6%	3%	5%	7%	4%	6%	7%	3%	0%	10%	6%	1%	1%	8%
Not sure	6%	4%	8%	4%	6%	8%	7%	5%	3%	10%	2%	12%	5%	5%	1%	10%

Do you agree or disagree with the following statement? - "While Highway 1 is currently being widened in stages (South of the Fraser) there must be a reactivated environmentally friendly Interurban passenger rail transit option provided for affordable interregional transit on the existing operational rail corridor between the Pattullo Bridge SkyTrain station and the City of Chilliwack."



	South Fraser	GENDER		AGE			MUNICIPALITY						WEEKDAY COMMUTE		EXPRESS BUS?	
		Male	Female	18-34	35-54	55+	North Delta	North Surrey	Langley (City)	Langley (Township)	Abbotsford	Chilliwack	Drive	Transit	Yes	No
Strongly agree	41%	44%	38%	36%	39%	54%	34%	39%	39%	41%	52%	45%	42%	40%	40%	41%
Moderately agree	46%	45%	47%	48%	50%	35%	53%	49%	41%	50%	38%	39%	48%	45%	50%	42%
Moderately disagree	6%	7%	5%	10%	4%	3%	6%	7%	10%	2%	5%	5%	4%	8%	6%	7%
Strongly disagree	2%	3%	2%	1%	3%	2%	4%	1%	4%	2%	1%	1%	2%	2%	2%	3%
Not sure	5%	2%	8%	6%	3%	6%	4%	4%	5%	6%	3%	9%	4%	5%	2%	8%